



COMMITTEE FOR
GREEN FOOTHILLS

ANNUAL REPORT 2015

LOCAL. VOCAL. EFFECTIVE.

THANKS TO OUR PARTNERS, MEMBERS, AND VOLUNTEERS FOR MAKING 2015 AN INCREDIBLE YEAR!

Dear Friends of Committee for Green Foothills,

Drive along Highway 280 and the Peninsula's sweeping hillsides take your breath away. Bike the coast in Half Moon Bay and the crashing waves and salty air clear your head. Hike San Jose's rolling foothills in the springtime and the heady scent of wildflowers fills your senses.

We've protected these extraordinary places for over 50 years. They are what make our region such a special place to live and work. We accomplished a lot in 2015, but so much is still at stake.

Land conservation is an ultra-marathon, not a sprint. While we're proud of our successes in 2015, they are the result of work started years ago. Our work can take years, even decades, and last year's efforts laid the foundation for wins yet to come.

This first-ever annual report illuminates what you made possible and provides a summary of how we've invested your gifts. Thank you for your ongoing generosity and your commitment to protecting open space for future generations.

In service,



Megan Medeiros
Executive Director

CONSERVATION IS A TEAM SPORT

Key:

- ▲ - Success!
- - In Progress

Ensuring public access and habitat protection at Vallemar Bluffs

Reduced impacts on "Big Wave" housing development, compromise reached

Preserving open space, farmland, and sensitive habitat through Half Moon Bay's General Plan

Protected agricultural lands and public access trail along the former Ocean Shore Railroad right-of-way

PG&E gas pipeline threatens sensitive habitat at Edgewood Park

Drones in Bedwell-Bayfront Park impact birds and other wildlife

Advocating for urban open space and parks through East Palo Alto's General Plan

Working to achieve an ordinance that will protect creeks from encroachment

Solar panel project modified to avoid harm to native plants and wildlife

Speaking up for 771 acres of farmland under threat

Sprawl plans jeopardize 721 acres of farmland

Rezoning and timber harvesting plans put old growth redwoods at risk

Caltrans exploring alternatives to broadcast spraying of herbicides along highways 35 and 84 in San Mateo County

WE ADVOCATED ON 30 LOCAL LAND USE ISSUES IN 2015, BUT WE DIDN'T DO IT ALONE. WE TACKLED EVERY ISSUE WITH THE HELP OF COMMITTED COMMUNITY LEADERS. THIS MAP ILLUSTRATES THE SCOPE OF OUR WORK; THE FOLLOWING PAGES HIGHLIGHT OUR KEY PARTNERS ON THREE IMPORTANT LOCAL ISSUES.

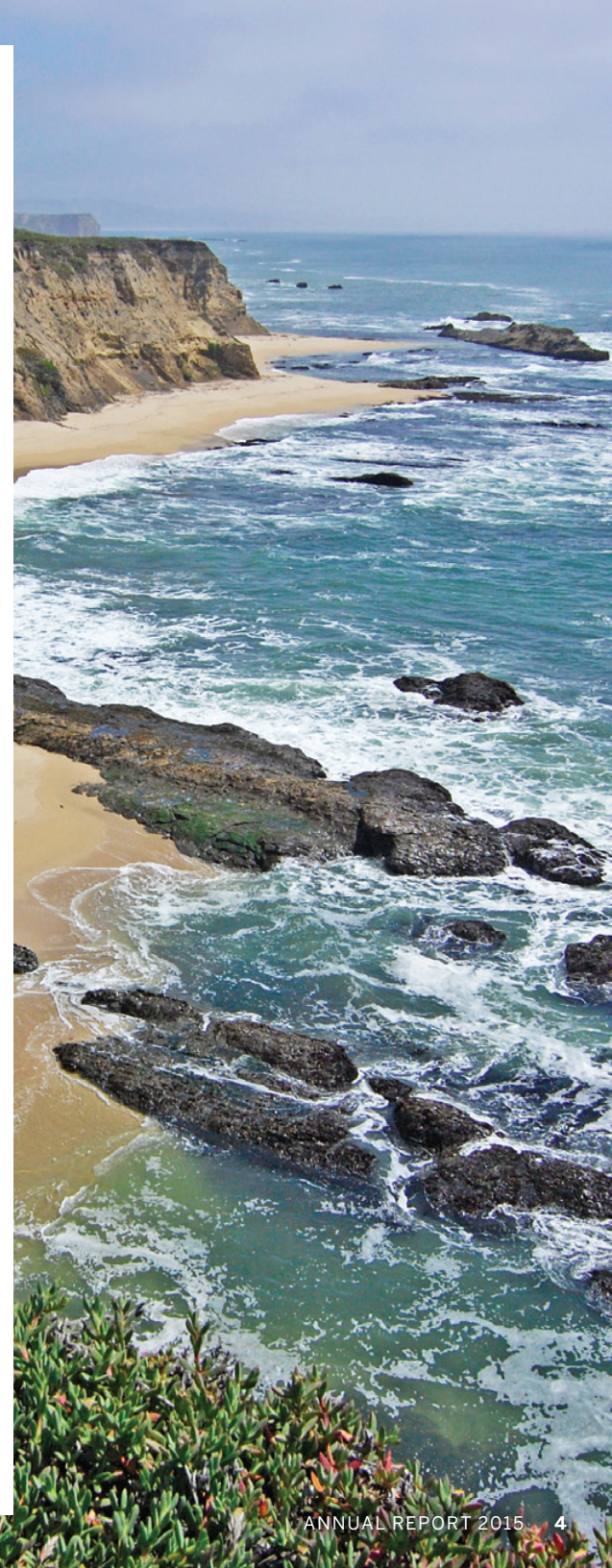
PARTNERING WITH COUNCILMEMBERS TO PRESERVE THE COAST

We all love the San Mateo County coast: bucolic farmlands, sandy beaches, and scenic vistas, dotted here and there with small-town development. Over five miles of coastline are within Half Moon Bay's city limits. When the city began work on a new general plan, it was a wildly open-ended process. Without intervention, farm fields and open space were up for grabs.

Together with local residents and environmental groups, Legislative Advocate Lennie Roberts encouraged the city council to focus on conservation. Lennie worked with the city council, including Councilmember Debbie Ruddock, to ensure that the city's general plan will preserve farmland and open space. As a result, the new general plan is much more likely to preserve the farmland and natural areas both residents and visitors love. Lennie continues to work with the city to make open space a priority.

"HALF MOON BAY'S VISTAS AREN'T JUST WINDOW DRESSING; THEY PROVIDE CRUCIAL HABITAT, AND A WAY OF LIFE FOR THE PEOPLE WHO LIVE HERE. I'M GRATEFUL THAT COMMITTEE FOR GREEN FOOTHILLS WORKS WITH US, ADVOCATING FOR THE PROTECTION OF OUR FARMS AND WILDERNESS. LENNIE ROBERTS HAS A KNACK FOR TURNING AFTERTHOUGHTS INTO PRIORITIES."

**- DEBBIE RUDDOCK
HALF MOON BAY CITY
COUNCILMEMBER**



WORKING WITH COMMUNITY LEADERS FOR PARKS

Experiences in nature can be difficult to come by for urban residents, especially in fast-growing cities facing increased development pressure. We must not lose sight of the need for nearby nature. In 2015, Legislative Advocate Alice Kaufman worked with residents and decision-makers in East Palo Alto on the city's general plan. Many of her recommendations were accepted by city staff.

At Committee for Green Foothills, we depend on residents who speak up for their communities. This is why we spearhead the Community Advocates Leadership Academy (CALA), a program that trains people to become more effective local advocates. In 2015, CALA had 34 graduates, including Kyli Arford and Sharif Rosales-Webb, a young couple who call East Palo Alto home.

"CALA gave us the strength and breadth of knowledge to advocate for open space," said Kyli. Kyli serves on East Palo Alto's General Plan Advisory Committee, and she and Sharif continue to work with Alice as the general plan moves forward.

**"IT IS OUR JOB TO BE
STEWARDS OF THIS LAND.
WE WANT OUR CHILDREN
TO BE PROUD OF OUR
CITY. WE TEACH THEM
THAT EVERY COMMUNITY
TAKES WORK FROM ITS
RESIDENTS TO MAKE IT
THRIVE."**

**- KYLI ARFORD
EAST PALO ALTO LEADER**



SAVING LOCAL AGRICULTURE WITH FARMERS

Michelle Lieberman and Gal Mariansky's small bungalow in Morgan Hill has a surprise in the backyard: a one-acre working farm. The industrious couple delivers a steady diet of fresh produce to dozens of families in Santa Clara County.

Gal and Michelle are committed to maintaining agriculture in our region, which is why they support Committee for Green Foothills. Legislative Advocate Julie Hutcheson is tirelessly working to save the remaining farmland in what once was known as the "Valley of the Heart's Delight."

"My priorities are preserving agriculture and open space here," says Michelle. "The work Committee for Green Foothills is doing locally is incredibly important, and I don't see anyone else doing it as successfully."

Michelle and Gal have cause for concern. The recent development proposals in Morgan Hill that would pave over some 700 acres of prime farmland are not the first such proposals, and they're unlikely to be the last.

"I OFTEN DON'T HAVE TIME TO PERSONALLY ATTEND PLANNING AND CITY COUNCIL MEETINGS. I'M GLAD TO HAVE JULIE GO FOR US," SAYS CGF SUPPORTER AND FARMER MICHELLE LIEBERMAN. SHE AND HUSBAND GAL MARIANSKY WELCOMED THEIR FIRST CHILD IN NOVEMBER.

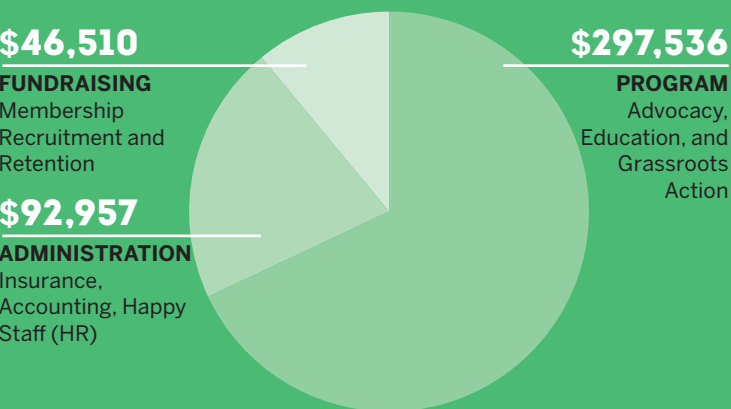


2015 BY THE NUMBERS

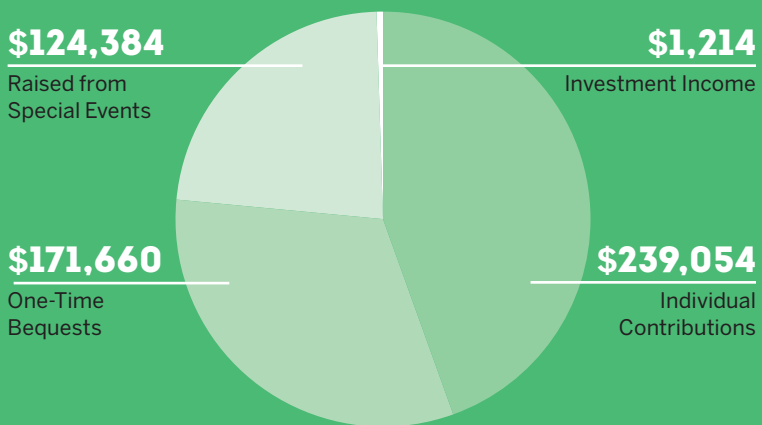


EXPENSES AND INCOME April 2014 - March 2015

TOTAL EXPENSES: **\$437,003**



TOTAL INCOME: **\$536,312**



“One cannot be pessimistic about the West. This is the native home of hope. When it fully learns that cooperation, not rugged individualism, is the quality that most characterizes and preserves it, then it will have achieved itself and outlived its origins. Then it has a chance to create a society to match its scenery.”

WALLACE STEGNER
FOUNDING PRESIDENT



**COMMITTEE FOR
GREEN FOOTHILLS**

3921 EAST BAYSHORE ROAD
PALO ALTO, CA 94303

WWW.GREENFOOTHILLS.ORG