



Oakland Unified School District

Update:
Recommended school
interventions in response to
loss of enrollment, academic
Board of Education Meeting
November 17, 2004
under-performance, and NCLB

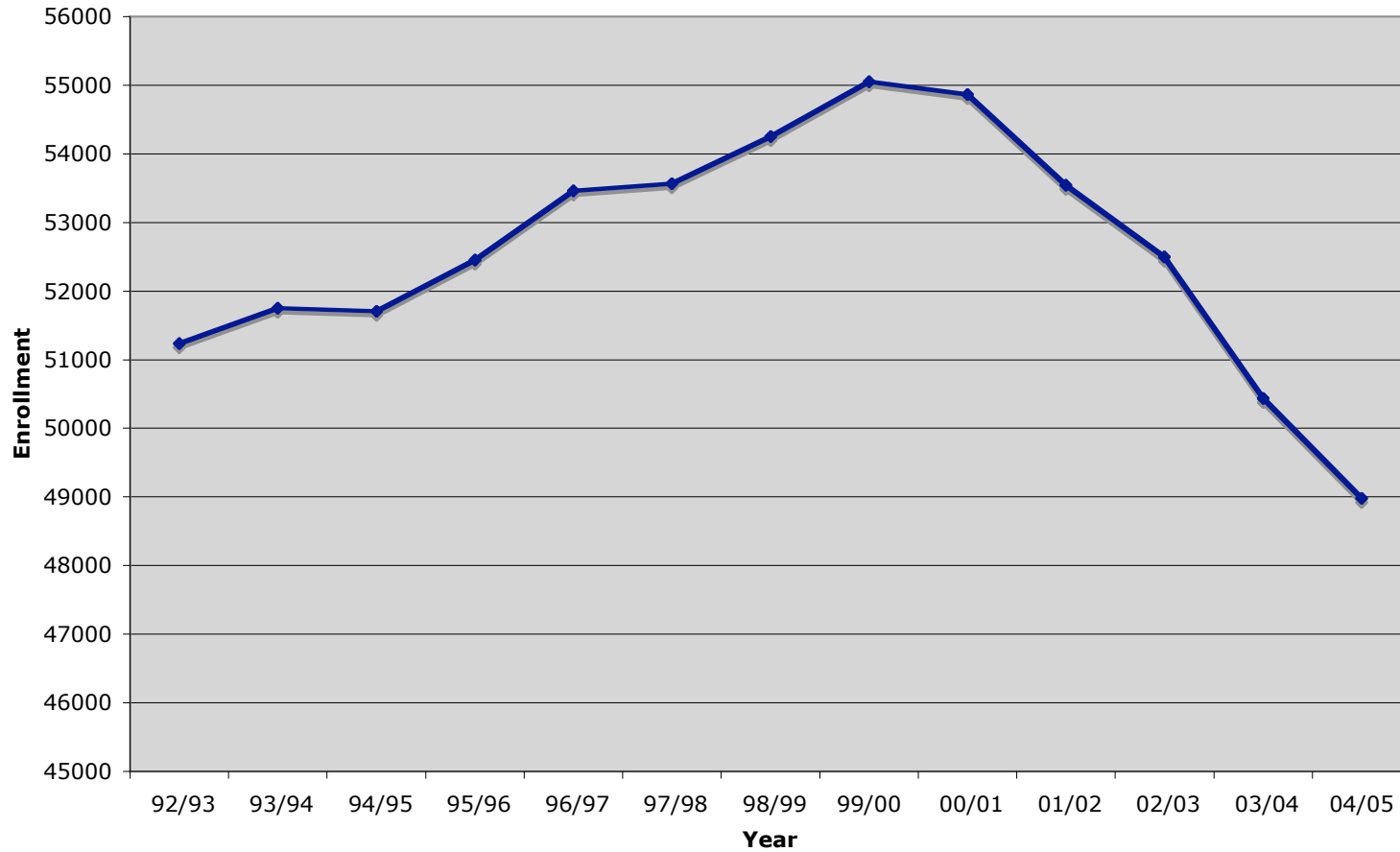


Agenda

- Enrollment loss: the current situation
- Academic interventions: national & local mandates
- Bottom line: OUSD proposed interventions

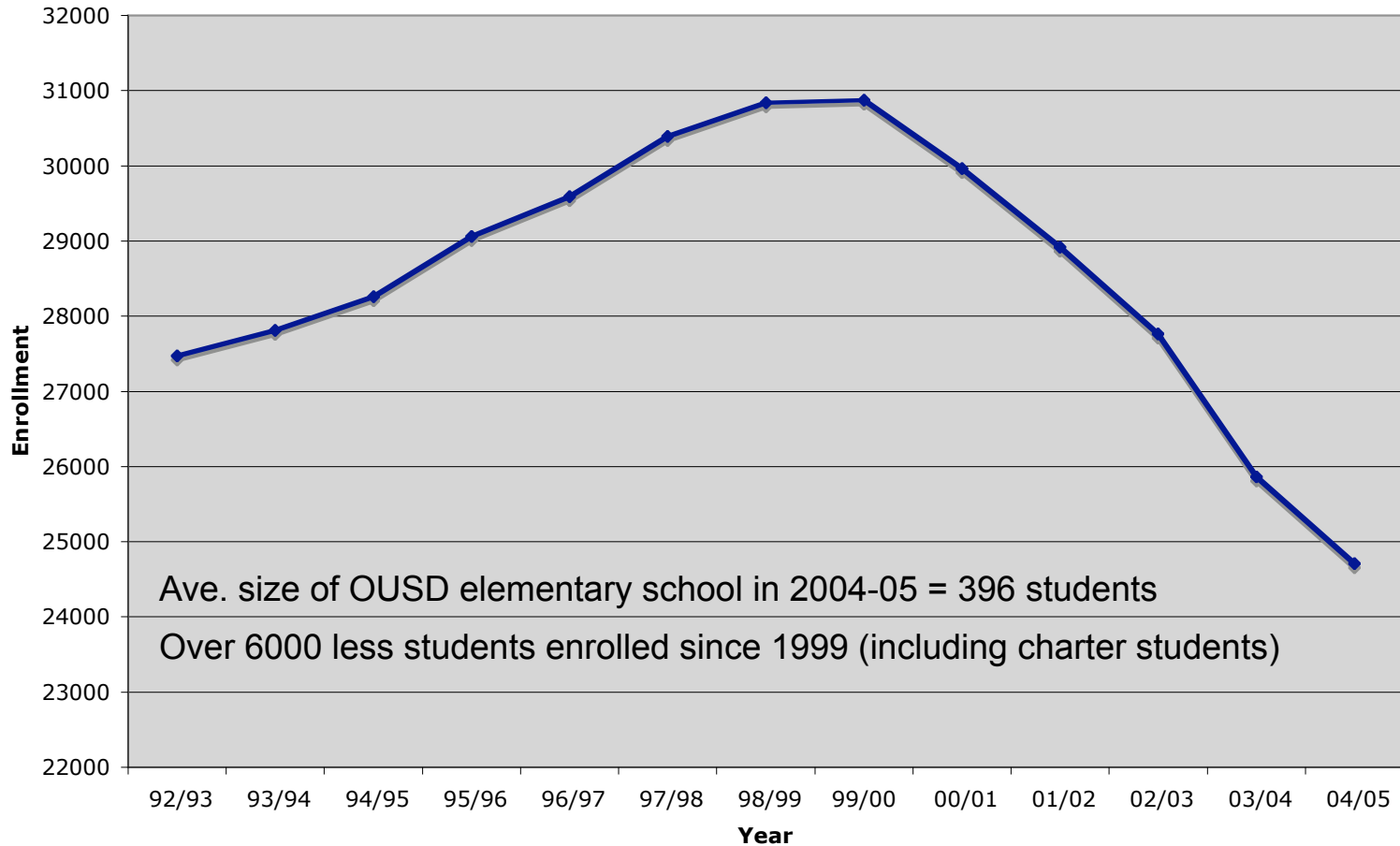
Since 1999, Oakland public schools (including charters) have lost over 6,000 students

Public School enrollment (including charters)



Almost all of the enrollment loss has occurred at the elementary level

Total ES enrollment including charters



The loss of enrollment experienced in OUSD cannot be attributed to loss to nearby districts

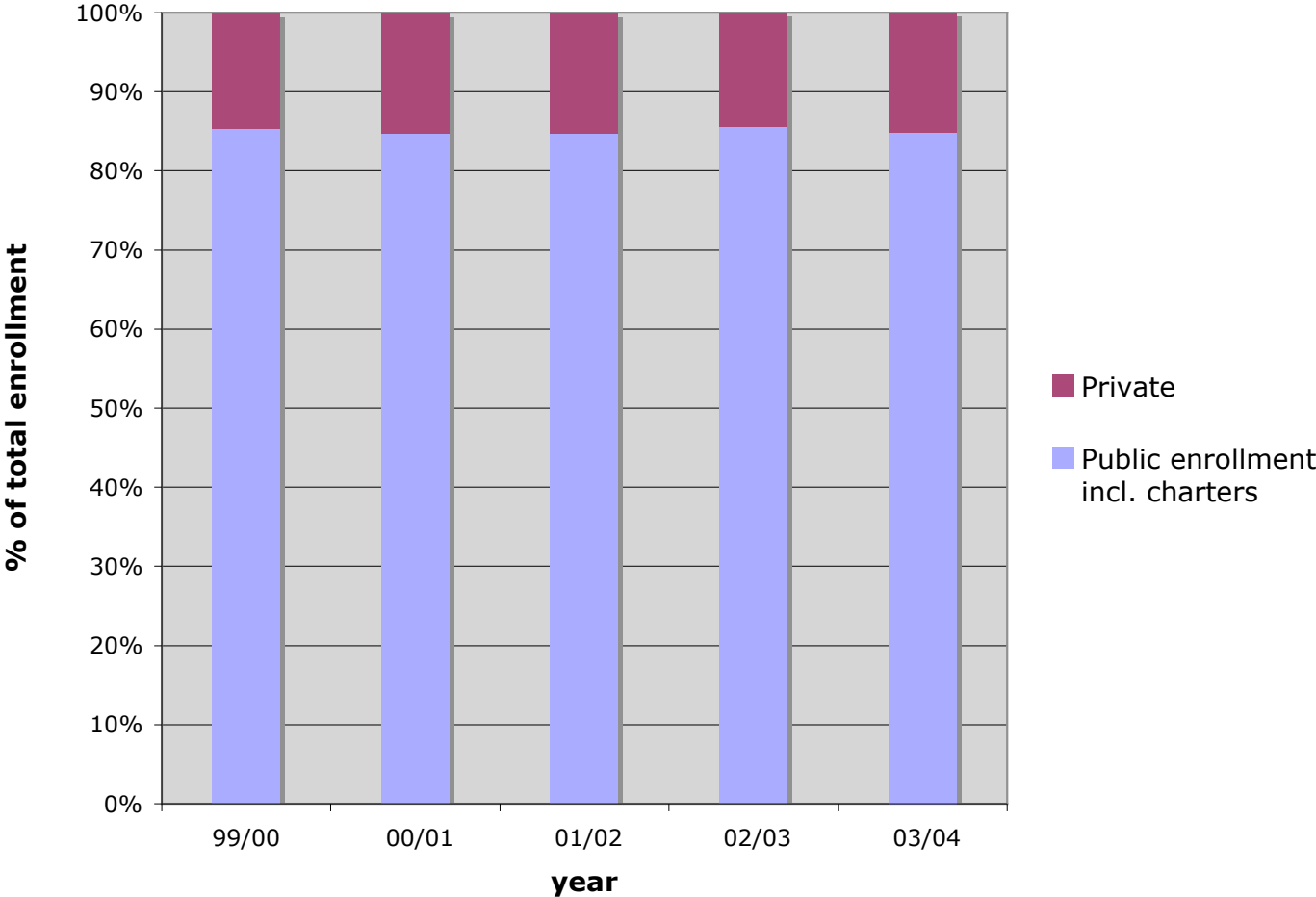
District	total	change	% change
Alameda	10387	-170	-1.6%
San Leandro	8,889	+267	+3.0%
Piedmont	2,646	+40	+1.5%
Berkeley	8,900	+50	+0.6%
Lafayette	3,280	-125	-3.8%

Change in enrollment in select area districts from 2003-04 to 2004-05

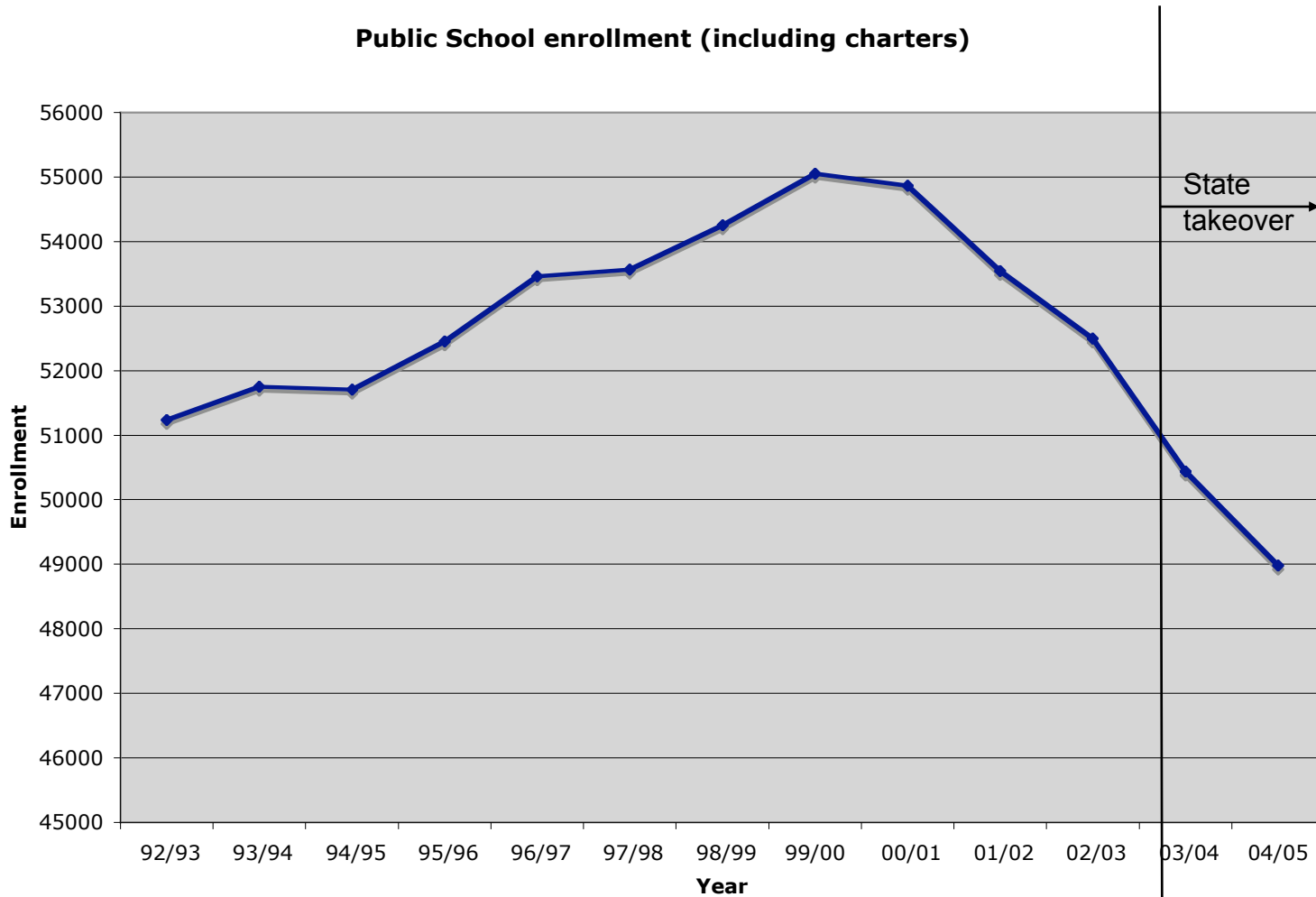


The loss of enrollment experienced in OUSD cannot be attributed to loss to private schools

Students in school in Oakland



The loss of enrollment experienced in OUSD cannot be attributed to loss of local control



The loss of enrollment cannot be attributed to academic performance since academic achievement has been improving

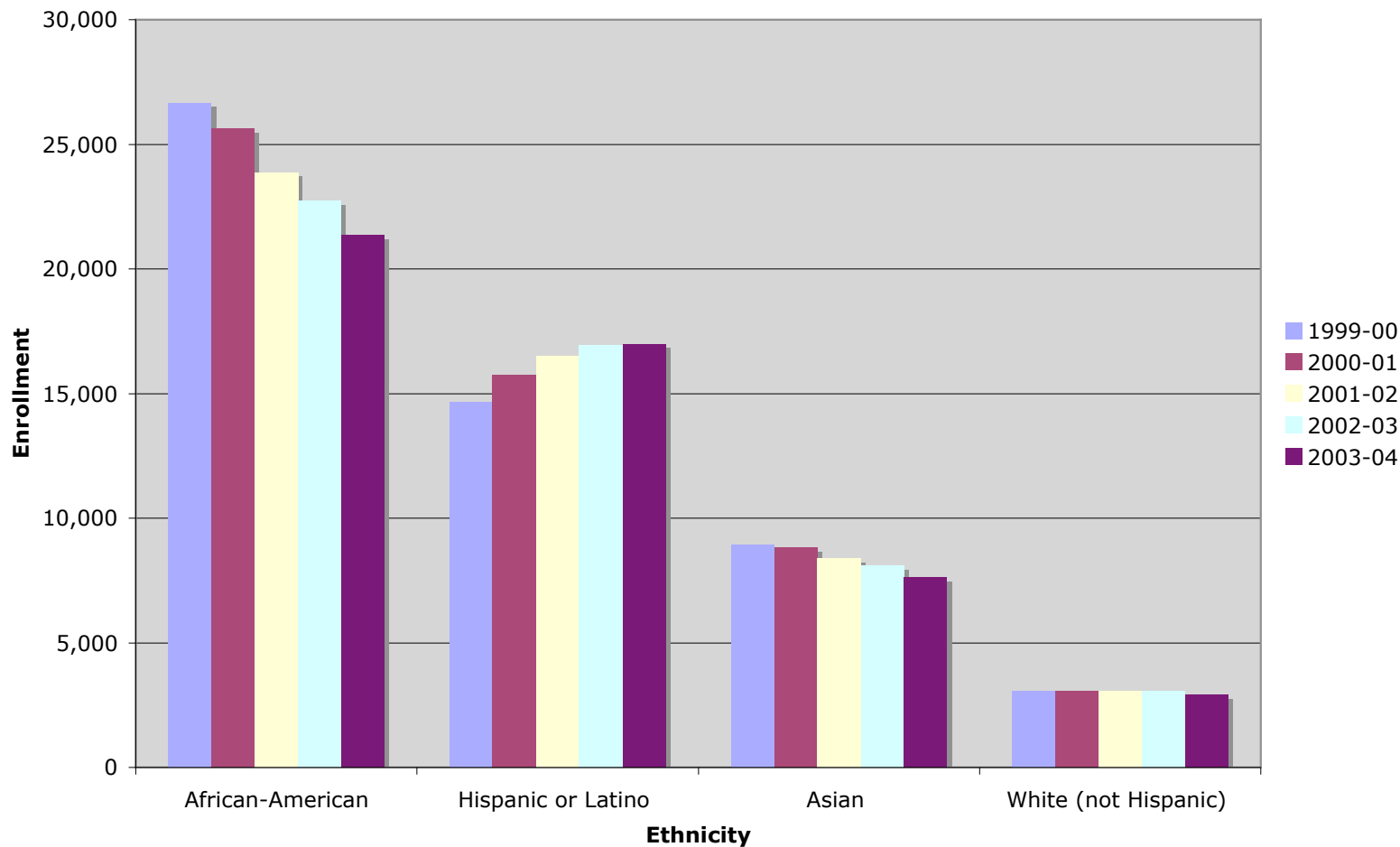
	OUSD Baseline Status: 1999 – 2000	OUSD Progress: 2003 - 2004
Schools with an API below 600	73%	43%
Schools with an API below 500	45%	8%
Elementary students scoring above the 50th percentile in language arts	28.5%	56% *
Elementary students scoring above the 50th percentile in math	46%	76% *
District EL students that were reclassified	1.6 %	17.1 %

* elementary school students scoring Basic, Proficient or Advanced on the California Standards Test (CST) – an approximation of the 50th percentile achievement on the SAT9 norm-referenced test



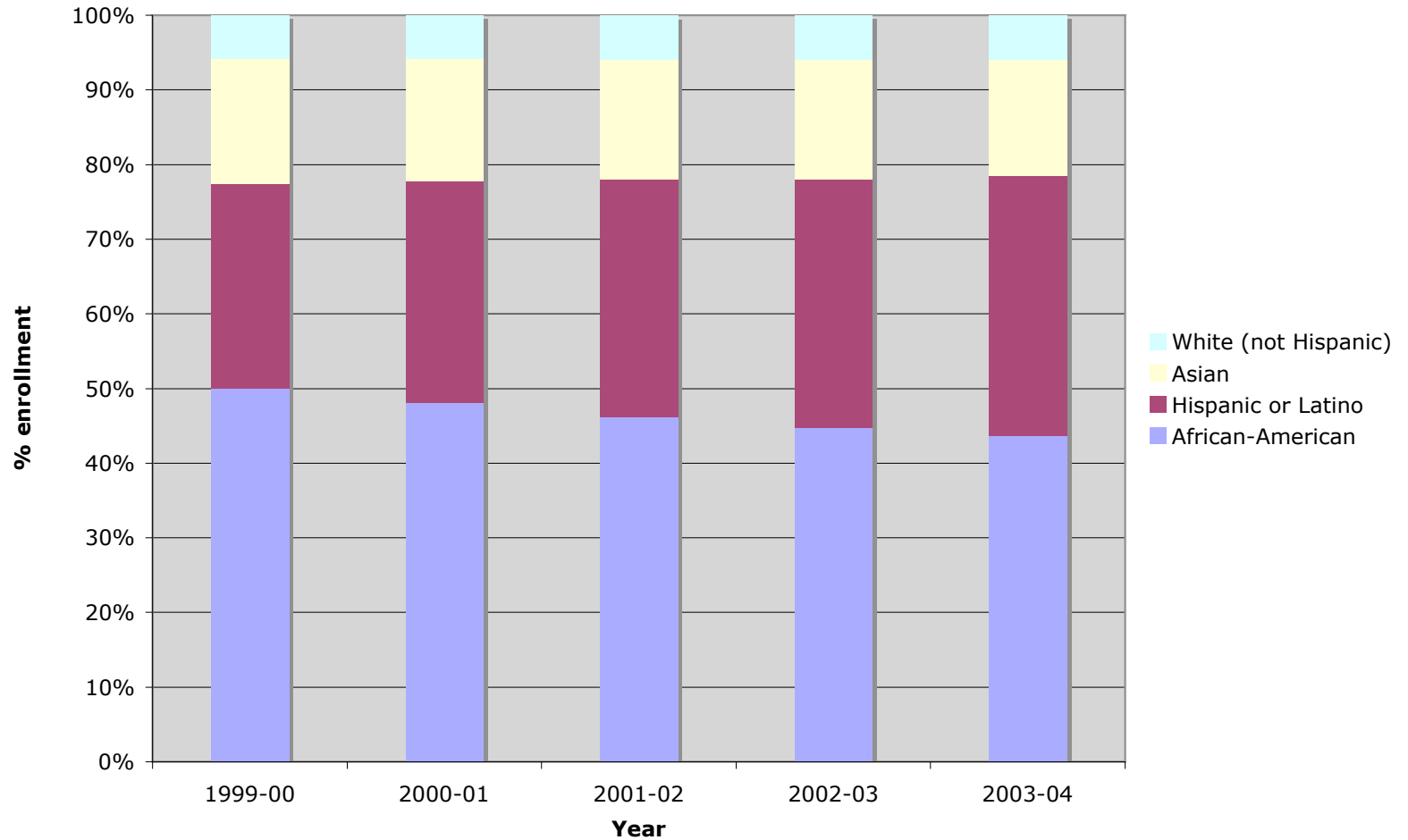
Enrollment loss has occurred primarily within the African-American community with some additional loss in the Asian community

Enrollment change by ethnicity



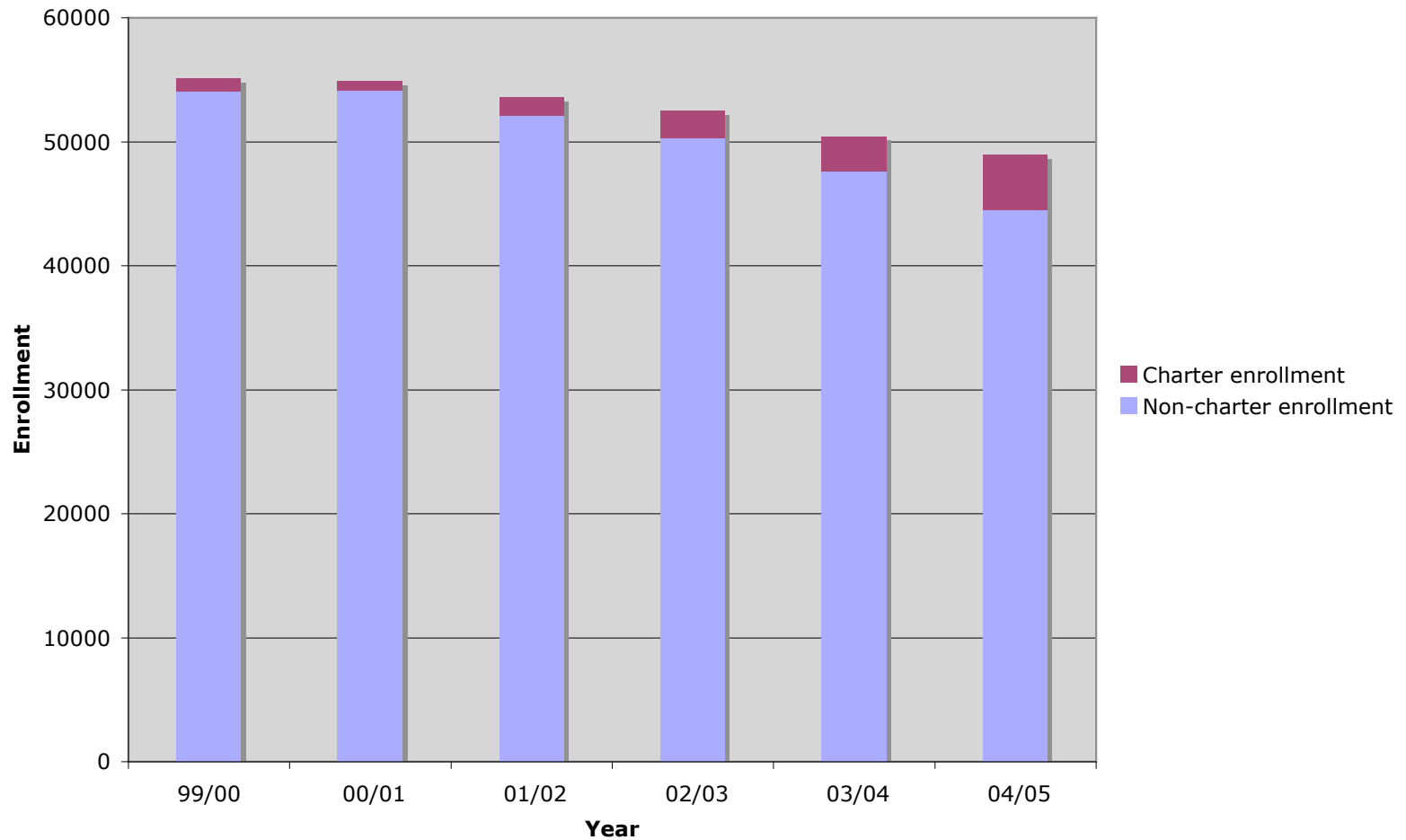
The loss of enrollment has changed the demographic make-up of the school district

Enrollment by ethnicity percentage



In addition to the loss of public school enrollment in Oakland, more students are attending charter schools (non-charter enrollment has dropped by over 9500 students since 1999)

Charter vs Non-charter school enrollment



Agenda

- Enrollment loss: the current situation
- Academic interventions: national & local mandates
- Bottom line: OUSD proposed interventions



The failure of several schools to make adequate yearly progress will result in increasing sanctions under NCLB

Program Improvement - Schools and districts that receive federal Title I funds enter Program Improvement (PI) when—for two years in a row—they do not make adequate yearly progress (AYP) toward the goal of having all students become proficient in English language arts and mathematics by 2013–14. Schools in Program Improvement face sanctions as shown below:

<u>Status</u>	<u>Program Improvement Sanctions</u>
Year 1	Parent choice, staff development
Year 2	Year 1 sanctions plus supplemental services
Year 3	Year 1-2 sanctions plus corrective action begins
Year 4	Year 1-3 sanctions plus create restructuring plan
Year 5	Restructure school



According to the law, restructuring of schools in Year 5 of Program Improvement must include one of the following:

- Reopening the school as a charter
- Replacing all or most of the school staff, which may include the principal, who are relevant to the school's poor performance
- Contracting with an outside entity to manage the school
- Arranging for the state to take over the school
- Any other major restructuring that addresses the school's problems



In addition to intervening in PI schools, the district has also committed to evaluation of the instructional program of all schools

- In alignment with OUSD board policy 6190, the following accountability criteria will be used for the evaluation of the core and consolidated programs instructional programs using the State Academic Performance Index (API) as the primary measure. The accountability criteria shall include five performance bands:

Exemplary (Blue)

API 800+

Achieving (Green)

API 675-799

Progressing (Yellow)

API 600-675

Below Expectations (Orange)

API below 600

Intervention (Red)

API below 600 and further

evaluated



Schools to be prioritized for intervention due to the instructional program (red performance band) will be evaluated against additional criteria

- Significant academic progress of the school as a whole and all significant ethnic groups
 - 5% growth in Language Arts on the California Standards Test (CST) for the school as a whole and all significant ethnic groups
 - 5% growth in Math on the CST for the school as a whole and all significant ethnic groups
- Significant academic progress of individual students
 - 5% growth in matched student scores on the Language Arts CST
 - 5% growth in matched student scores on the Math CST
- Significant progress in providing an environment conducive to learning
 - Significant improvement in attendance

Note:

Alternative and continuation schools and schools less than three years old shall be evaluated based on the progress of individual students in the areas of achievement, attendance and discipline.



Agenda

- Enrollment loss: the current situation
- Academic interventions: national & local mandates
- Bottom line: OUSD proposed interventions

Process for recommendations

- State Administrator, Dr. Randolph Ward appoints staff School Intervention Team to make recommendations to the OUSD Board
- Board Presentation to explain the context in which we need to make our recommendations (10/27/04)
- Creation of comprehensive database for data-based decision-making
 - API and AYP data, STAR results, enrollment information, facility capacity data, Program Improvement/SAIT/II/USG/HPSG status information, etc.
- Data-based identification of schools needing interventions
- Meetings with schools' staff and parent groups
- Process/recommendations presented to Administrators (11/16/04)
- Recommendations presented to Board (11/17/04)
- Continuing school community meetings (11/17-12/7/04)
- Tentative decision (Board meeting, 12/8/04)



Network Support Schools

NETWORK SUPPORT SCHOOLS - NO INTERNAL OR EXTERNAL ACADEMIC ALERTS							
PI YEAR	SCHOOL NAME	INTERVENTION	5 yr decline of over 30%	API below 600	SAIT school	under 300 students	over 500 students
0	MAXWELL PARK	support via network	-x-				
0	ASCEND	support via network				-x-	
0	INT'L COMM. SCHL. (ICS)	support via network				-x-	
0	PERALTA	support via network				-x-	
0	KAISER	support via network				-x-	
0	MARSHALL	support via network				-x-	
0	TILDEN	support via network				-x-	
0	REDWOOD HEIGHTS	support via network				-x-	
0	EMERSON	support via network				-x-	
0	LA ESCUELITA	support via network				-x-	
0	GRASS VALLEY	support via network				-x-	
0	HOWARD	support via network				-x-	
0	HILLCREST	support via network				-x-	
0	CHABOT	support via network					
0	CLEVELAND	support via network					
0	CROCKER HIGHLANDS	support via network					
0	LAKEVIEW	support via network					



Network Support Schools (cont.)

NETWORK SUPPORT SCHOOLS - NO INTERNAL OR EXTERNAL ACADEMIC ALERTS							
PI YEAR	SCHOOL NAME	INTERVENTION	5 yr decline of over 30%	API below 600	SAIT school	under 300 students	over 500 students
0	LAZEAR	support via network					
0	MARKHAM	support via network					
0	JOAQUIN MILLER	support via network					
0	MONTCLAIR	support via network					
0	PIEDMONT AVE	support via network					
0	SEQUOIA	support via network					
0	THORNHILL	support via network					
0	CARL MUNCK	support via network					
0	HOOVER	support via network					
0	WESTLAKE MS	support via network					
0	BELLA VISTA	support via network					-X-
0	FRUITVALE	support via network					-X-
0	MONTERA MS	support via network					-X-
0	OAKLAND TECHNICAL HS	support via network					-X-
0	LINCOLN	support via network					-X-
0	SKYLINE HS	support via network					-X-
0	EDNA BREWER	exploring creation of new schools					-X-



Network Support Schools – New Schools

NETWORK SUPPORT SCHOOLS - 3 YEARS TO MEET ACADEMIC AND ENROLLMENT TARGETS							
PI YEAR	SCHOOL NAME	STRATEGY	5 yr decline of over 30%	API below 600	SAIT school	under 300 students	over 500 students
0	CASTLEMONT (BIT)	new - coaching					
0	CASTLEMONT (HLA)	new - coaching					
0	CASTLEMONT (VPA)	new - coaching					
0	EAST OAKLAND COM HIGH	new - coaching				-X-	
0	ENCOMPASS	new - coaching				-X-	
0	EXPLORE	new - coaching				-X-	
0	YES YOUTH EMPWMNT	new - coaching		-X-		-X-	
0	THINK COLLEGE NOW	new - coaching		-X-		-X-	
0	ARCHITECTURE ACADEMY	new - coaching		-X-			
0	ROBESON VPA	new - coaching		-X-			
0	MANDELA	new - coaching		-X-			
0	MEDIA COLLEGE PREP	new - coaching		-X-			
0	KIPP	new - coaching				-X-	
0	MET WEST	new - coaching		-X-		-X-	



Alert for Action Schools

ALERT FOR ACTION SCHOOLS - EXTERNAL AND/OR INTERNAL ACADEMIC WARNINGS							
PI YEAR	SCHOOL NAME	STRATEGY	5 yr decline of over 30%	API below 600	SAIT school	under 300 students	over 500 students
1	BURCKHALTER	support and watch				-X-	
1	LAFAYETTE	Reading First					
1	LAUREL	support and watch					
1	PARKER	HPSG/Reading First	-X-				
1	BRET HARTE	IIUSP/HPSG					-X-
1	GARFIELD	IIUSP/HPSG					-X-
1	FRICK MIDDLE SCHOOL	IIUSP/HPSG		-X-			-X-
1	OAKLAND HS	support and watch		-X-			-X-
1	SHERMAN	Reading First		-X-			
1	URBAN PROMISE	new school - coaching		-X-		-X-	
0	LIFE ACADEMY	new school - coaching		-X-			
0	MELROSE LEADERSHIP AC	new - school coaching		-X-		-X-	
0	ROOSEVELT MS	support and watch		-X-			-X-



Alert for Action Schools – Alternative Education

ALERT FOR ACTION SCHOOLS - ALTERNATIVE EDUCATION							
PI YEAR	SCHOOL NAME	STRATEGY	5 yr decline of over 30%	API below 600	SAIT school	under 300 students	
1	DEWEY HS	support and watch		-x-		-x-	
0	MERRITT MIDDLE COL HS	TBD		-x-		-x-	
0	FAR WEST (MS & HS)	strong support		-x-		-x-	
0	STREET ACADEMY	watch		-x-		-x-	
0	RUDSDALE	close		-x-		-x-	
0	BUNCHE	close		-x-		-x-	
0	VILLAGE ACADEMY	close		-x-		-x-	
0	COMMUNITY DAY	support and watch		-x-		-x-	



Pending Action Schools

PENDING ACTION SCHOOLS - WORKING TO EXIT EXTERNAL MANDATES							
PI YEAR	SCHOOL NAME	STRATEGY	5 yr decline of over 30%	API below 600	SAIT school	under 300 students	over 500 students
3	FRANKLIN	strong support					
2	BROOKFIELD	strong support					-X-
2	ACORN WOODLAND	strong support		-X-			
2	GLENVIEW	SAIT support			-X-		
0	SANTA FE	SAIT support			-X-		
0	M.L. KING, JR.	SAIT support		-X-	-X-		



Heading Toward Success

2004-05 PI Status	Site Name	Enrollment				API			over 2 years			
		2004-05	5-yr Change (00/01-04/05)	Current Year change (03/04-04/05)	03/04 change from projecti ons	2003	2004	Growth 2003 to 2004	% change in FBB/BB ELA	% change in A/P ELA	% change in FBB/BB Math	% change in AP Math
YEAR 2	BROOKFIELD	502	-18%	-4%	0%	584	635	51	-15%	6%	-23%	14%
YEAR 3	FRANKLIN	708	-18%	-2%	2%	676	723	47	-9%	10%	-18%	19%
YEAR 2	ACORN WOODLAND	244	-	-	-	0	595	-	-24%	6%	-42%	23%



Immediate Action Schools

IMMEDIATE ACTION SCHOOLS - EXTERNAL AND/OR INTERNAL ACADEMIC ISSUES AND LOSS OF ENROLLMENT							
PI YEAR	SCHOOL NAME	STRATEGY	5 yr decline of over 30%	API below 600	SAIT school	under 300 students	
1	FIT	close					
1	SSJ	close					
1	COLE	TBD after communication with West Oakland	-x-	-x-			
1	LOWELL MIDDLE SCHOOL	close 6th and 7th grade	-x-	-x-			
1	CARTER MIDDLE SCHL	close 6th and 7th grade	-x-	-x-		-x-	
0	WASHINGTON	close	-x-	604		-x-	
0	GOLDEN GATE	close	-x-	-x-		-x-	



Immediate Action Schools (cont.)

IMMEDIATE ACTION SCHOOLS - STRONG EXTERNAL AND INTERNAL ACADEMIC ISSUES							
PI YEAR	SCHOOL NAME	STRATEGY	5 yr decline of over 30%	API below 600	SAIT school	under 300 students	
2	KING ESTATES MS	close	-x-	-x-		-x-	
2	McCLYMONDS HS	close and create 3 new schools		-x-	-x-		-x-
2	MANZANITA	creating 2 new schools		-x-			-x-
2	CALVIN SIMMONS	exploring creation of new schools on the campus	-x-	-x-			-x-
2	ELMHURST MS	exploring creation of new schools on the campus		-x-			-x-
2	HAVENSCOURT MS	exploring creation of new schools on the campus		-x-	-x-		-x-
2	MADISON MIDDLE SCHL	TBD after communication with the community	-x-	-x-	-x-		
2	CLAREMONT MS	TBD after communication with the community					



Immediate Action Schools by Mandate

IMMEDIATE ACTION SCHOOLS - MANDATED INTERVENTION UNDER NCLB (NO OPTION!)							
PI YEAR	SCHOOL NAME	STRATEGY	5 yr decline of over 30%	API below 600	SAIT school	under 300 students	
4	ALLENDALE	TBD...subsidiary charter or RFP?					
4	HAWTHORNE	TBD...subsidiary charter or RFP?					-X-
4	STONEHURST	TBD...subsidiary charter or RFP?					-X-
4	SOBRANTE PARK	TBD...subsidiary charter or RFP?				-X-	
4	COX	TBD subsidiary charter or RFP and create new school		-X-			-X-
4	HIGHLAND	TBD subsidiary charter or RFP and create new school		-X-			-X-
4	LOCKWOOD	TBD...subsidiary charter or RFP?	-X-	-X-			-X-
4	WEBSTER ACADEMY	TBD...subsidiary charter or RFP?		-X-			-X-
4	JEFFERSON	TBD...subsidiary charter or RFP?		-X-			-X-
4	MELROSE ELEMENTARY	TBD...subsidiary charter or RFP?		-X-			
4	WHITTIER	TBD...subsidiary charter or RFP?		-X-			-X-
4	PRESCOTT	TBD...subsidiary charter or RFP?	-X-	-X-	-X-		
4	HORACE MANN	TBD...subsidiary charter or RFP?	-X-	-X-	-X-		

